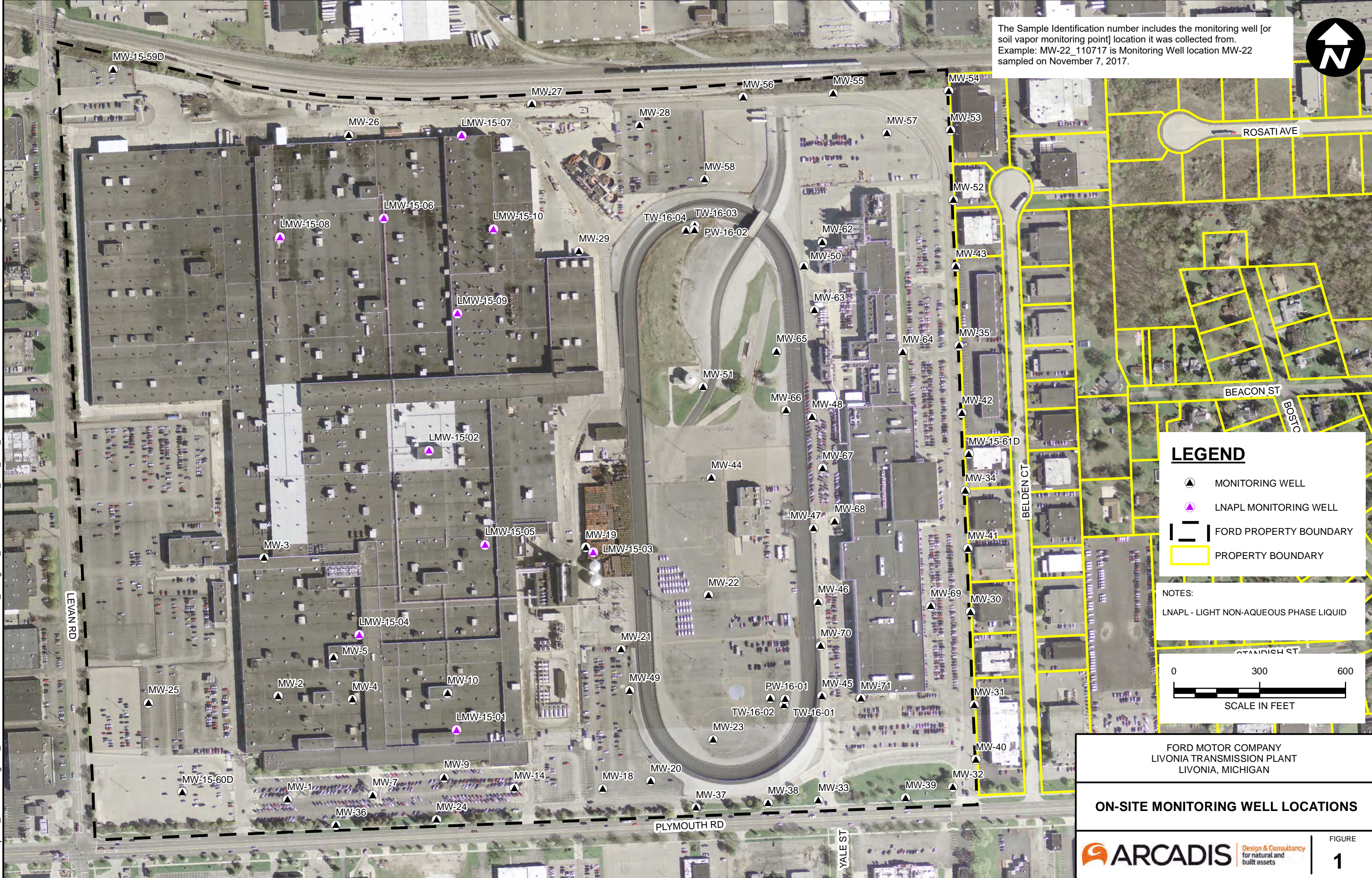


CITY: Novi DIV: ENV DB: MG PIC: R. ELLIS PM: K. HINSKEY PROJECT NUMBER: M001322.0001 COORDINATE SYSTEM: NAD 1983 StatePlane Michigan South FIPS 2113 Feet Z:\GISProjects\ENVO\Novi\Brighton_MNFordLivonia\GISdocs\2017-12\RAP_RIP\Figures_20171206\Onsite_Well_Locs_20171206.mxd PLOTTED: 12/6/2017 4:16:04 PM BY: mgrs

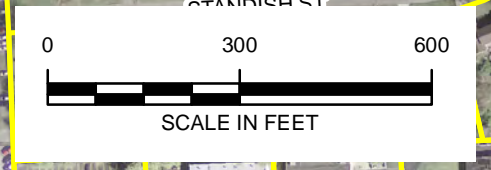
The Sample Identification number includes the monitoring well [or soil vapor monitoring point] location it was collected from.
Example: MW-22_110717 is Monitoring Well location MW-22 sampled on November 7, 2017.



LEGEND

- MONITORING WELL
- LNAPL MONITORING WELL
- FORD PROPERTY BOUNDARY
- PROPERTY BOUNDARY

NOTES:
LNAPL - LIGHT NON-AQUEOUS PHASE LIQUID



FORD MOTOR COMPANY
LIVONIA TRANSMISSION PLANT
LIVONIA, MICHIGAN

ON-SITE MONITORING WELL LOCATIONS