



Ford Motor Company  
Livonia Transmission Plant  
36200 Plymouth Road  
Livonia, Michigan 48150

March 14, 2016

**Re: Update on Ford Livonia Transmission Plant Groundwater Testing Project**

Dear Property Owner/Resident:

As follow-up to our February 8 meeting at the Livonia Transmission Plant, we wanted to provide you with an update on the underground water testing in the neighborhood.

As you know, we have been drilling temporary borings in street right-of-ways to identify where vinyl chloride migration stops east of the Livonia Transmission Plant. We have now completed the initial phase of sampling and of all of the results shown on **Figure 1**, only two locations require follow-up investigation.

All information and samples collected to date show no health risk to residents and there is **no impact to your home's drinking water**. We found two borings with levels above the Michigan Department of Environmental Quality's criterion for drinking water at 2 parts-per-billion (ppb).

- HPT-80, located at the north end of Boston Post Street, had levels of 9 ppb 12-15 feet below ground, and
- HPT-97, located just north of the west end of Standish Street, had levels of 3 ppb 16-19 feet below ground.

We continue to work closely with the City of Livonia and MDEQ on this project. Both parties are aware of our findings and our plan to continue testing near both locations as shown on **Figure 2** and then assess and communicate next steps.

If you have questions, please call our toll-free number at 1-844-511-1002 or send an email to [info@FordLivoniaBostonBeaconProject.com](mailto:info@FordLivoniaBostonBeaconProject.com).

We will continue to keep you informed about our work. Please visit our website, [www.FordLivoniaBostonBeaconProject.com](http://www.FordLivoniaBostonBeaconProject.com), to stay up-to-date on the latest information about the project.

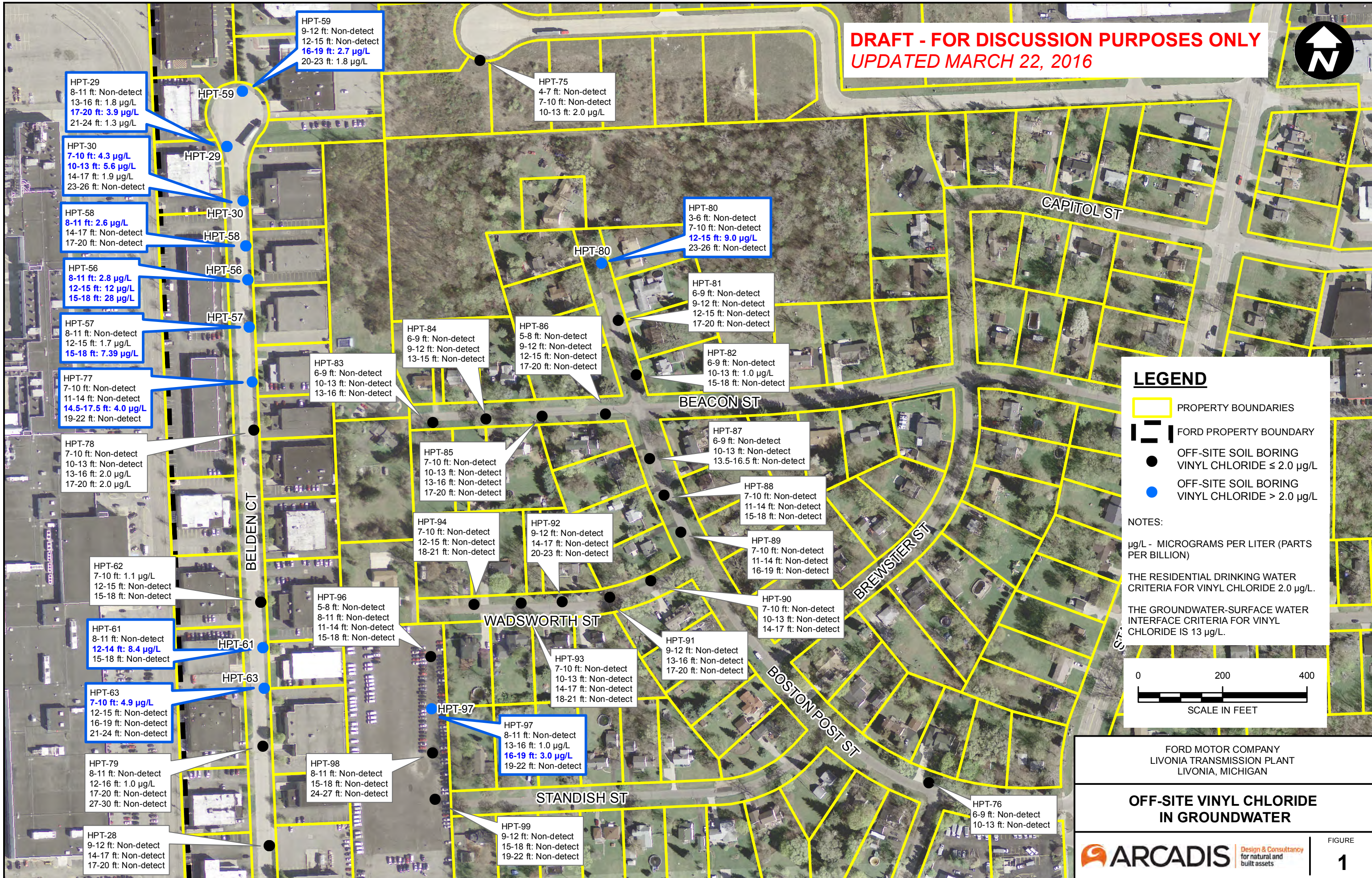
Best,

A handwritten signature in black ink that reads "Robert A. Groden".

Robert "Bob" A. Groden, Plant Manager  
Ford Motor Company – Livonia Transmission Plant

Attachments: Figure 1 and Figure 2

**DRAFT - FOR DISCUSSION PURPOSES ONLY**  
**UPDATED MARCH 22, 2016**



**LEGEND**

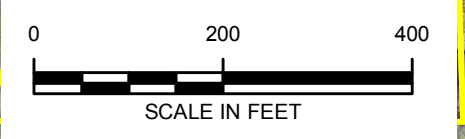
- PROPERTY BOUNDARIES
- FORD PROPERTY BOUNDARY
- OFF-SITE SOIL BORING  
VINYL CHLORIDE ≤ 2.0 µg/L
- OFF-SITE SOIL BORING  
VINYL CHLORIDE > 2.0 µg/L

NOTES:

µg/L - MICROGRAMS PER LITER (PARTS PER BILLION)

THE RESIDENTIAL DRINKING WATER CRITERIA FOR VINYL CHLORIDE 2.0 µg/L.

THE GROUNDWATER-SURFACE WATER INTERFACE CRITERIA FOR VINYL CHLORIDE IS 13 µg/L.



FORD MOTOR COMPANY  
LIVONIA TRANSMISSION PLANT  
LIVONIA, MICHIGAN

**OFF-SITE VINYL CHLORIDE  
IN GROUNDWATER**

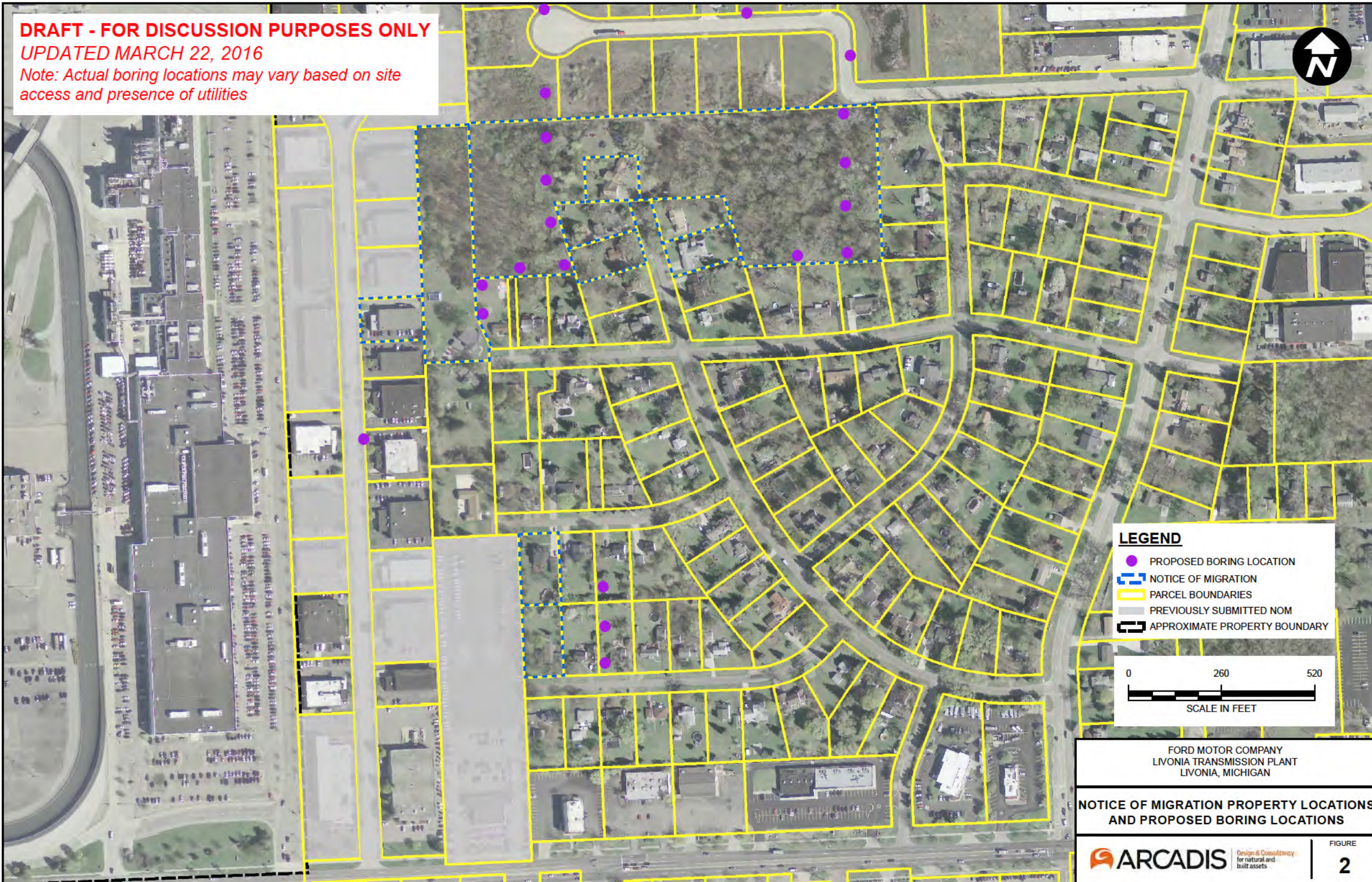
ARCADIS Design & Consultancy  
for natural and  
built assets

FIGURE  
**1**






**DRAFT - FOR DISCUSSION PURPOSES ONLY**

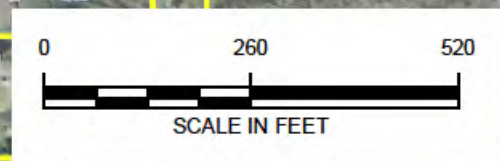
UPDATED MARCH 22, 2016

Note: Actual boring locations may vary based on site access and presence of utilities



**LEGEND**

-  PROPOSED BORING LOCATION
-  NOTICE OF MIGRATION
-  PARCEL BOUNDARIES
-  PREVIOUSLY SUBMITTED NOM
-  APPROXIMATE PROPERTY BOUNDARY



FORD MOTOR COMPANY  
LIVONIA TRANSMISSION PLANT  
LIVONIA, MICHIGAN

**NOTICE OF MIGRATION PROPERTY LOCATIONS  
AND PROPOSED BORING LOCATIONS**



FIGURE  
**2**