



Ford Motor Company  
Livonia Transmission Plant  
36200 Plymouth Road  
Livonia, Michigan 48150

June 27, 2016

**Re: Update on Ford Livonia Transmission Plant Groundwater Testing Project**

Dear Property Owner/Resident:

In follow-up to our February 8 meeting at the Livonia Transmission Plant and our subsequent March 14, 2016 letter, we wanted to provide you with an update on the underground water testing in the neighborhood.

As you know, we have been drilling temporary borings on a few private properties and in street right-of-ways to identify where the vinyl chloride migration stops east of the Livonia Transmission Plant. The groundwater data collected to date are shown on **Figure 1**. As a result, we are going to continue our work to determine the extent of the affected areas and next steps.

All information and samples collected to date continue to show there is no health risk to residents, and there is **no impact to your home's drinking water**. During this most recent sampling, nine borings indicated vinyl chloride levels above MDEQ's most stringent criterion for drinking water at 2 parts-per-billion (ppb). However, the level of vinyl chloride detected to the east dropped from 9 ppb detected at one testing location (HPT-80) on Boston Post Road to 5.9 ppb detected at two other testing location (HPT-116 and HPT- 118) on the vacant property south of Rosati Drive.

We plan to continue testing near the locations shown on **Figure 2** and continue to work closely with the City of Livonia and MDEQ on this project. We will keep you informed as we continue our efforts. Both parties are aware of our findings and our plan to continue testing and then assess and communicate the next steps.

As always, if you have questions, please call our toll-free number at 1-844-511-1002 or send an email to [info@FordLivoniaBostonBeaconProject.com](mailto:info@FordLivoniaBostonBeaconProject.com).

We will continue to keep you informed about our work. Please visit our website [www.FordLivoniaBostonBeaconProject.com](http://www.FordLivoniaBostonBeaconProject.com) to stay up-to-date on the latest information about this project.

Best,

A handwritten signature in black ink that reads "Robert A. Groden".

Robert A. Groden, Plant Manager  
Ford Motor Company – Livonia Transmission Plant

Attachments: Figure 1 and Figure 2

**DRAFT - FOR DISCUSSION PURPOSES ONLY**  
**UPDATED JUNE 27, 2016**



**LEGEND**

- PROPERTY BOUNDARIES
- FORD PROPERTY BOUNDARY
- OFF-SITE SOIL BORING  
VINYL CHLORIDE ≤ 2.0 µg/L
- OFF-SITE SOIL BORING  
VINYL CHLORIDE > 2.0 µg/L

**NOTES:**

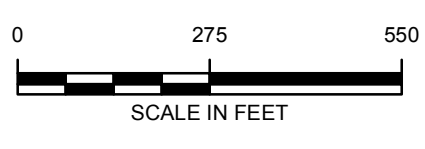
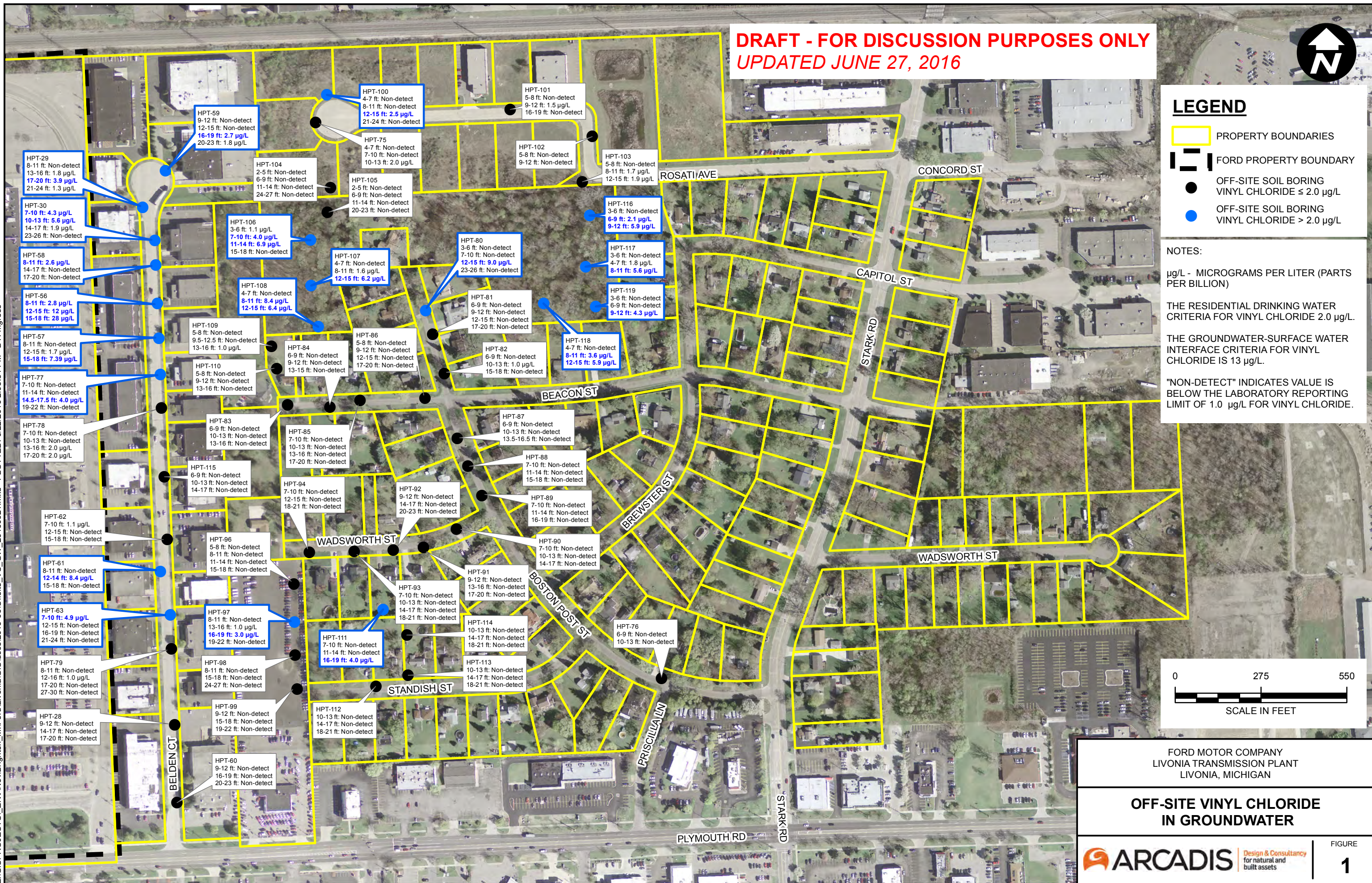
µg/L - MICROGRAMS PER LITER (PARTS PER BILLION)

THE RESIDENTIAL DRINKING WATER CRITERIA FOR VINYL CHLORIDE 2.0 µg/L.

THE GROUNDWATER-SURFACE WATER INTERFACE CRITERIA FOR VINYL CHLORIDE IS 13 µg/L.

"NON-DETECT" INDICATES VALUE IS BELOW THE LABORATORY REPORTING LIMIT OF 1.0 µg/L FOR VINYL CHLORIDE.

CITY: Novi DIV: ENV DB: TRY PIC: PM: TR: PROJECT NUMBER: COORDINATE SYSTEM: NAD 1983 StatePlane Michigan South FIPS 2113 Feet Intl  
 Z:\GISPROJECTS\ENVA\Novi\Brighton\_MilFord\Livingston\GIS\docs\2016-06\Ofisite\_VC\_GW\_20160621.mxd PLOTTED: 6/22/2016 2:05:34 PM BY: mgriss



FORD MOTOR COMPANY  
 LIVONIA TRANSMISSION PLANT  
 LIVONIA, MICHIGAN

**OFF-SITE VINYL CHLORIDE  
 IN GROUNDWATER**

**ARCADIS** Design & Consultancy  
 for natural and built assets

FIGURE  
**1**

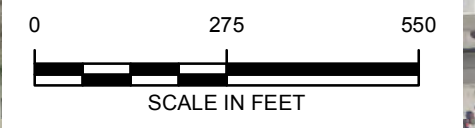
**DRAFT - FOR DISCUSSION PURPOSES ONLY**  
**UPDATED JUNE 27, 2016**



**LEGEND**

- PROPOSED HPT BORING
- ADDITIONAL HPT BORINGS, IF NEEDED
- COMPLETED HPT BORING
- PROPERTY BOUNDARIES
- FORD PROPERTY BOUNDARY

NOTES:  
 LOCATION OF PROPOSED BORINGS APPROXIMATE AND SUBJECT TO CHANGE BASED ON ACCESS AND UTILITIES.



FORD MOTOR COMPANY  
 LIVONIA TRANSMISSION PLANT  
 LIVONIA, MICHIGAN

**PROPOSED OFF-SITE BORING LOCATIONS**



CITY: Novi DIV: ENV DB: TRY PIC: PM: TM: TR: PROJECT NUMBER: COORDINATE SYSTEM: NAD 1983 StatePlane Michigan South FIPS 2113 Feet Intl  
 Z:\GISPROJECTS\EN\Novi\Brighton\_Mi\Ford\Livonia\GIS\docs\2016-06\Offsite\_Proposed\_Borings\_20160621.mxd PLOTTED: 6/22/2016 2:11:22 PM BY: mgrs

